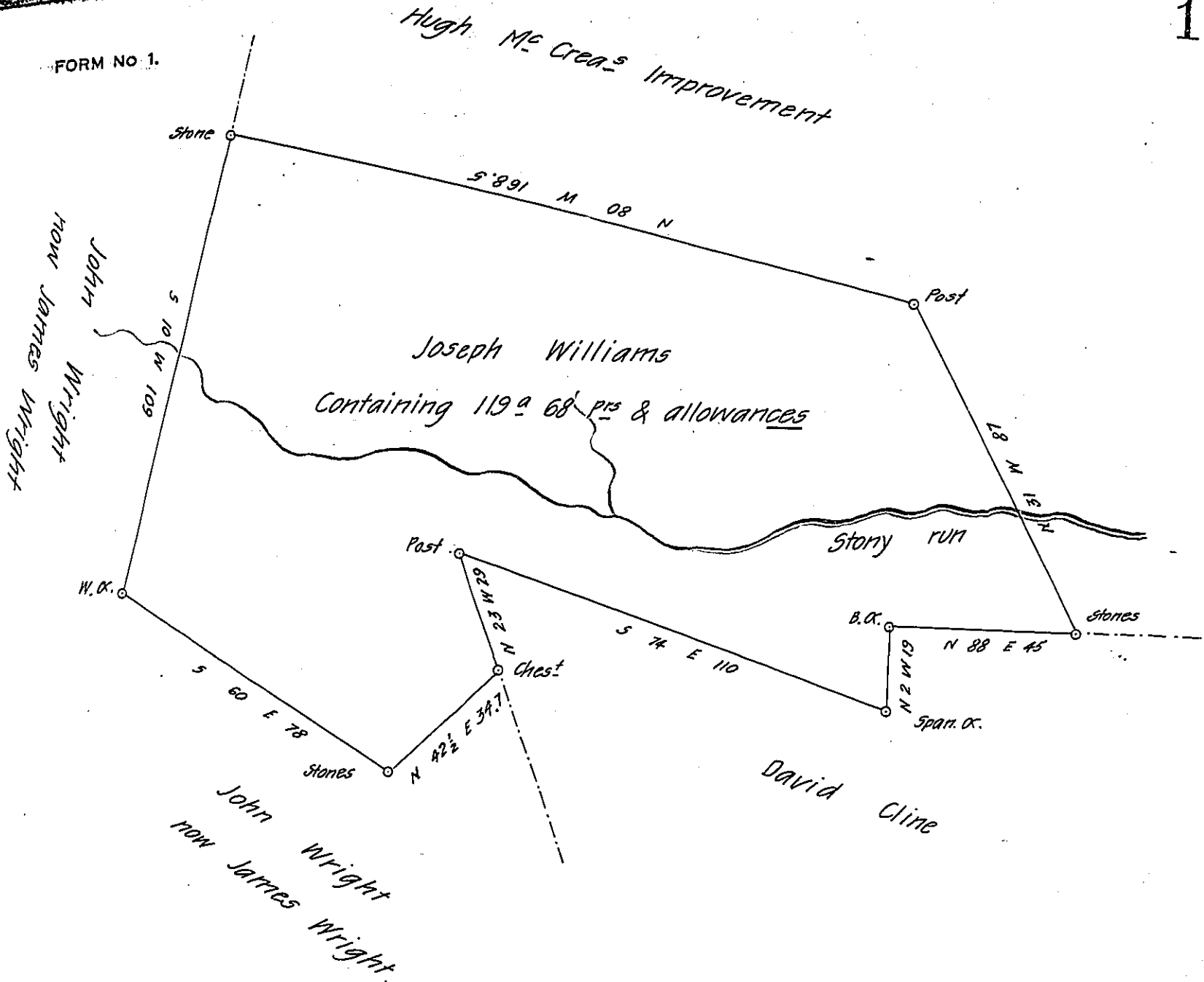


FORM NO. 1.



A draught of a Piece of Land situate part in Newbury and part in Warrington Township in the County of York Containing as above set forth 119 a 68 p 1/2 & allowances &c. Surveyed on the 13<sup>th</sup> day of April A.D. 1833 in Pursuance of the Application No 3430 for 150 a. dated the 16<sup>th</sup> day of April 1767 &c. the above Land is now owned by John Lard & John Sutton in right of Lewis Lewis and Levi Stephens and said to be patented.. but had no access to any papers., so says James Wright.

Dan! Small Contr.

To the Board of Property

IN TESTIMONY that the above is a copy of the original remaining on file in the Department of Internal Affairs of Pennsylvania, made conformably to an Act of Assembly approved the 16th day of February, 1833, I have hereunto set my Hand and caused the Seal of said Department to be affixed at Harrisburg, this twenty ninth day of June 1908

*Henry Houck*  
Secretary of Internal Affairs.